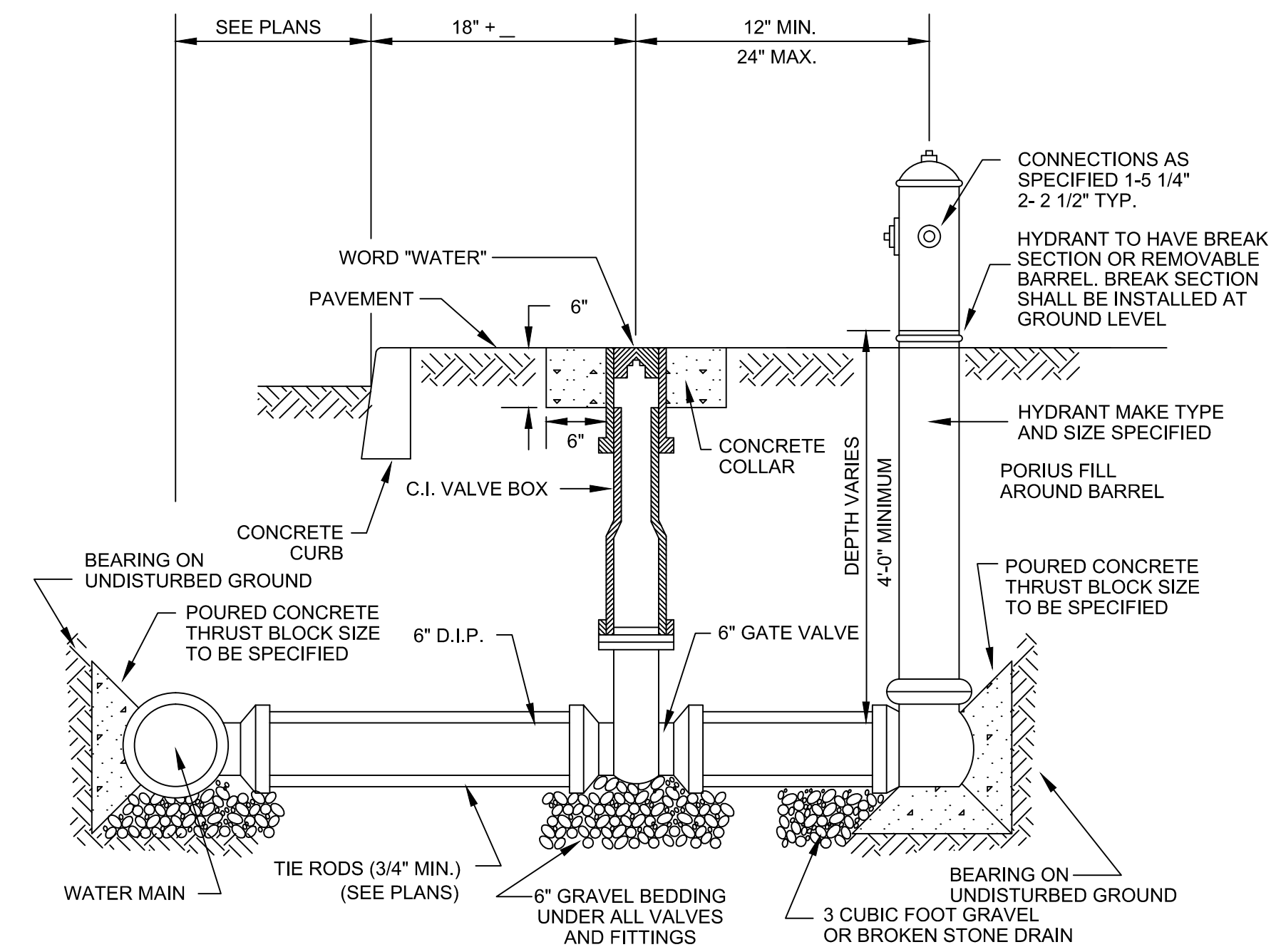


FIRE HYDRANT DETAIL

NOT TO SCALE



CONSTRUCTION NOTES:

1. CONCRETE FOR THRUST BLOCKS TO BE 3000 PSI COMPRESSION STRENGTH.
2. SIZE AND BEARING AREA FOR THRUST BLOCKS SHALL CONFORM TO "CURRENT AWWA STANDARDS", OR SHALL BE DESIGNATED ON THE PLANS.
3. FINISH PAINTING AND MARKING SHALL BE DESIGNATED ON THE PLANS OR CONTRACT DOCUMENTS OR SHALL BE AS DIRECTED BY THE ENGINEER.
4. SPECIAL HYDRANT ARRANGEMENTS OR SETTINGS TO BE DETAILED BY CONTRACTOR SUBJECT TO ENGINEER'S APPROVAL.
5. ALL CONNECTIONS AND FITTINGS TO BE MECHANICAL JOINT.
6. TIE RODS MUST BE COATED WITH BITUMASTIC.
7. THRUST BLOCKS AND TIE RODS SHALL BE INSTALLED FOR EACH HYDRANT.
8. TRENCH MUST BE FULLY RESTORED. SEE ROADWAY RESTORATION DETAILS.

THRUST BLOCK TABLE

DIAMETER (d) OF PIPE (INCHES)	UP TO 22-1/2° BEND	UP TO 45° BEND	UP TO 90° BEND	TEES AND PLUGS	DEAD END TEE AND 90° BEND
CONTACT BEARING AREA OF THRUST BLOCK WITH UNDISTURBED EARTH (SQUARE FEET)					
4	0.6	1.2	2.1	1.5	A: 1.5 B: 0.6
6	1.2	2.4	4.5	3.3	A: 3.3 B: 1.2
8	2.1	4.2	8.1	5.7	A: 5.7 B: 2.4
10	3.3	6.9	12.6	8.7	A: 8.7 B: 3.9
12	5.1	9.9	18.0	12.6	A: 12.6 B: 5.4
16	8.7	17.4	32.1	22.5	A: 22.5 B: 9.6
20	13.8	27.0	50.1	35.4	A: 35.4 B: 14.7
24	19.8	39.0	72.0	51.0	A: 51.0 B: 21.0

CONSTRUCTION NOTES:

1. BEARING AREA FOR THRUST BLOCKS ARE BASED ON THE UNDISTURBED SOIL WITH BEARING CAPACITY OF 1000 LBS. PER SQUARE FOOT. FOR OTHER SOIL OF LESS BEARING CAPACITY, THE AREAS SHALL BE ADJUSTED ACCORDINGLY, (FIGURE 14, ASCE "PIPELINE DESIGN FOR WATER AND WASTEWATER, 1975").
2. ALL CONCRETE FOR THRUST BLOCKS SHALL BE NJDOT, CLASS C.
3. DIMENSIONS OF THRUST BLOCKS SHALL BE APPROXIMATELY SQUARE, AND THE THRUST BLOCKS SHALL BE POURED FROM FITTING SUCH THAT THEY BEAR ON THE UNDISTURBED WALL OF THE TRENCH.
4. THE TABULATED CONTACT BEARING AREAS LISTED ARE FOR HORIZONTAL AND DOWNWARD THRUST ONLY, AND ARE NOT APPLICABLE FOR UPWARD THRUST.

City of Jersey City  
Division of Architecture, Engineering,  
Traffic and Transportation

13-15 LINDEN AVE. EAST  
JERSEY CITY, NEW JERSEY 07305  
(201) 547-4412



2	Director Name Changed	6/10
1	1/2" Exp. Joint and 50 Lb. Roofing Felt Added to Detail	7/09
NO.	REVISIONS	DATE

CITY OF JERSEY CITY

STANDARDS

NO.	REVISIONS	DATE

DRAWING

SHEET

9  
17

Relocation of Fire Hydrant

DRAWN BY	DESIGNED BY	CHECKED BY
PROJECT NO.	CADD FILE	SCALE

Date